

## Labnet FastPette™ Pro and V2

### Quick Start Guide

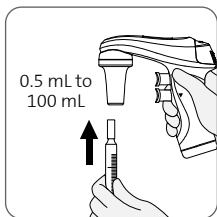
#### Catalog Numbers:

P2002 (FastPette Pro)

P2000 (FastPette V2)

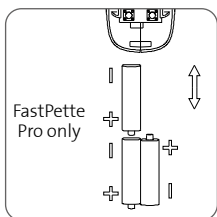


This quick guide is intended to provide a brief overview of the main features and operation of Labnet pipette controllers. For detailed information, please refer to the User Manual that can be found at [www.labnetlink.com](http://www.labnetlink.com) in several languages.



### Intended Use

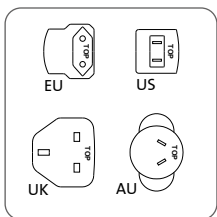
The pipette controller is a device intended for general laboratory use only, for pipetting liquids with the use of measuring pipets. It can work with all types of glass or plastic pipets in the volume range from 0.5 mL to 100 mL.



### Battery Charge

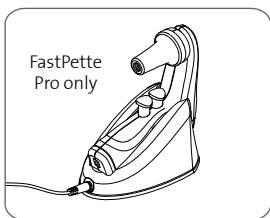
The batteries may be charged only with the original charger. Using chargers other than the original one may damage the battery.

**Fastepette™ Pro:** 3 NiHM type AAA are delivered with the product and need to be installed before the first use.

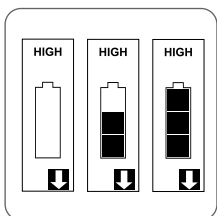
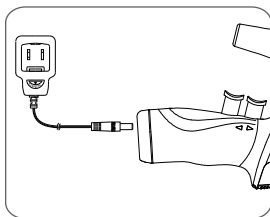


**FastPette V2:** NiHM battery is installed in the product.

Use country specific adapter. Charge the batteries either on charging stand or directly connecting the charger to the socket. Input: 100-240V, 50/60Hz, 0.2A; output: DC 9V.



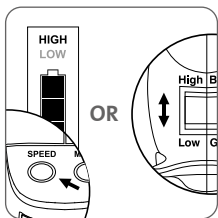
OR



Charging process is indicated by:

**FastPette Pro:** successive lighting of “bars”. Full charging time: 7 to 8 hours. The batteries are charged when all 3 “bars” are displayed simultaneously.

**FastPette V2:** continuous lighting of the LED indicator, which stops after the charger is disconnected. Full charging time: up to 11 hours.

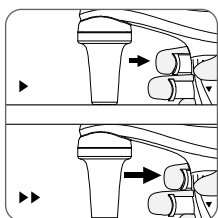


### Speed Setting

**FastPette™ Pro:** Press the SPEED button until the display shows the correct speed – HIGH or LOW.

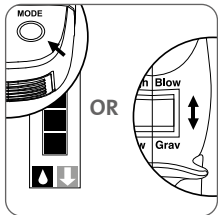
**FastPette V2:** Change position of the SPEED switches.

- HIGH speed - fast aspirating recommended for pipets <5 mL
- LOW speed - slow aspirating recommended for pipets >5 mL and foaming liquids



### Manual Speed Control

- Speed can be controlled manually by pressing the trigger buttons



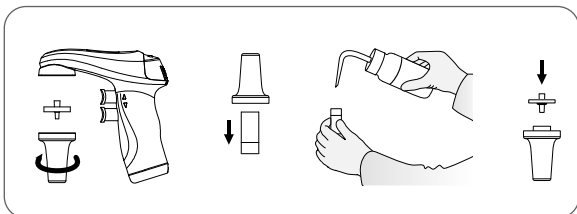
### Mode Control

**FastPette Pro:** Press the MODE button until the display shows the correct mode – BLOW OUT (arrow) or GRAV (drop).

**FastPette V2:** Change position of the MODE switches.

**NOTE:** Pump is not working when in GRAV mode.

### Filter Replacement



## Safety Notes

### **WARNING! Risk of injury**

**CAUTION:** Risk of damage to the device or errors in pipetting of liquids.

Before starting the work with the pipet controller every user should read these operating instructions carefully.

#### **CAUTION:**

- Using the device inconsistently with the operating instructions may result in damaging the device.
- The device should be serviced only at an authorized service center, otherwise the manufacturer will be relieved from any liability under the warranty.
- Only original spare parts and accessories, recommended by the manufacturer, shall be used.
- Only the original charger, supplied by the manufacturer, shall be used for charging the batteries.
- In case of incorrect functioning of the pipet controller, work shall be stopped. The device shall be cleaned and sent for repair to an authorized service center.
- In the case of mechanical damage to the casing, the device shall be immediately sent for repair to an authorized service center.
- The use of excessive force during work shall be avoided.

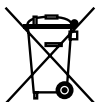
### **WARNING!**

- During the work with the pipet controller general safety regulations regarding risks related with laboratory work should be observed. Protective clothing, goggles, and gloves should be worn.
- The pipet controller shall not be used for measuring substances with vapors of which damage the following plastics: PP, SI, EPDM, POM.
- The pipet controller shall not be used in an environment where explosion risk is present.
- Flammable liquids shall not be measured – in particular substances with flash-point below 0°C (ether, acetone).
- The pipet controller shall not be used for drawing acids with a concentration above 1 mol/L.
- The pipet controller shall not be used for drawing solutions with a temperature above 50°C.
- The pipet controller may work in temperature range from +10°C to +35°C.
- In the case of mechanical damage to the casing, the device shall be immediately sent for repair to an authorized service center.

## Cleaning

- External parts may be cleaned with a swab moistened with isopropyl alcohol.
- The nose piece and the pipet holder may be autoclaved at 121°C for 20 minutes.
- The filter included in the set may be sterilized by autoclaving at 121°C for not more than 15 minutes.
- The outer body of the pipet controller is UV resistant, the recommended distance from the radiation source to exposed element should be not less than 50 cm. Prolonged and very intense UV exposure can cause de-coloration of pipet controller parts, without affecting its performance.

## Product Disposal



According to Directive 2012/19/EU of the European Parliament and of the Council of 4 July 2012 on waste electrical and electronic equipment (WEEE), the HTL Swiftpet Pro Pipet Controller is marked with the crossed-out wheeled bin and must not be disposed of with domestic waste.

Consequently, the buyer shall follow the instructions for reuse and recycling of waste electronic and electrical equipment (WEEE) provided with the products and available at [www.corning.com/weee](http://www.corning.com/weee).

## Warranty

The Labnet FastPette™ Pro and FastPette V2 pipet controllers are covered by a 1 (one) year limited warranty. For more information on the warranty limitations refer to full version of the User Manual available at [www.labnetlink.com](http://www.labnetlink.com).

For additional product or technical information, visit [www.labnetlink.com](http://www.labnetlink.com) or contact your local sales office.

## **NORTH AMERICA**

t 800.492.1110

t 978.442.2200

## **ASIA/PACIFIC**

### **Australia/New Zealand**

t 61 427286832

### **Chinese Mainland**

t 86 21 3338 4338

f 86 21 3338 4300

### **India**

t 91 124 4604000

f 91 124 4604099

### **Japan**

t 81 3-3586 1996

f 81 3-3586 1291

### **Korea**

t 82 2-796-9500

f 82 2-796-9300

### **Singapore**

t 65 6572-9740

f 65 6735-2913

### **Taiwan**

t 886 2-2716-0338

f 886 2-2516-7500

## **EUROPE**

CSEurope@corning.com

### **France**

t 0800 916 882

### **Germany**

t 0800 101 1153

### **The Netherlands**

t 020 655 79 28

### **United Kingdom**

t 0800 376 8660

### **All Other European Countries**

t +31 (0) 206 59 60 51

## **LATIN AMERICA**

grupoLA@corning.com

### **Brazil**

t 55 (11) 3089-7400

### **Mexico**

t (52-81) 8158-8400

© 2021 Corning Incorporated. All rights reserved.  
7/21 CLSLN-AN-1008DOC REV1

Made in Poland

For a listing of trademarks, visit [www.corning.com/clstrademarks](http://www.corning.com/clstrademarks).  
All other trademarks are the property of their respective owners.