

Constant Temperature Selection Guide



simply reliable



ProBlot 6



ProBlot 12

- Precise temperature control and stability for reproducible results
- Variable speed, rotisseries hold 35mm bottles and 50mL tubes
- Durable stainless steel interior
- Optional accessories include rocking platforms and different sized rotisseries

Specifications

	ProBlot 6	ProBlot 12
Bottle Capacity	6 large or 12 small	12 large or 24 small
Rotisserie speed	4 to 20 rpm	4 to 20 rpm
Temp Range	Ambient +5°C to 80°C	Ambient +5°C to 80°C
Temp Resolution	0.1°C	0.1°C
Temp Uniformity	0.5°C	0.5°C
Exterior dims	48.3 x 44.5 x 49.5 cm/ 19 x 17.5 x 19.5 in	48.3 x 44.5 x 49.5 cm/ 19 x 17.5 x 19.5 in
Chamber dims	36.8 x 27.9 x 34.3 cm/ 14.5 x 11 x 13.5 in	36.8 x 27.9 x 34.3 cm/ 14.5 x 11 x 13.5 in
Weight	59 lb/26.8 kg	59 lb/26.8 kg



Ordering Information

Cat#	Description
H0600A	ProBlot 6 Hybridization oven with 2 large bottles and 1 pack of mesh, 120V
H1200A*	ProBlot 12 Hybridization oven with 2 large bottles and 1 pack of mesh, 120V

Accessories for the oven can be found on the following page

*To order 230V units add -230V to the end of the catalog number. Specify cord type by adding -EU or -UK

- Precise temperature and stability for reproducible results
- Variable speed, rotisseries hold 35mm bottles and 50mL tubes
- Durable stainless steel interior
- Optional accessories include rocking platforms and different sized rotisseries
- Integrated shaker with 99 min timer



Ordering Information

Cat#	Description
H1200-SA*	ProBlot 12S Hybridization Oven with built-in shaker, 2 large bottles and 1 pk mesh, 120V

Platforms sold separately

Accessories for the oven can be found on the following page

*To order 230V units add -230V to the end of the catalog number. Specify cord type by adding -EU or -UK

Specifications

Bottle capacity	12 large or 24 small
Rotisserie speed	4 to 20rpm
Temp. Range	Ambient +5°C to 80°C
Temp Resolution	0.1°C
Temp Uniformity	0.5°C
Shaker speed	20 to 300 rpm
Timer	0-99 min or hold
Exterior dims	48.3 x 44.5 x 49.5 cm/ 19 x 17.5 x 19.5 in
Chamber dims	36.8 x 27.9 x 34.3 cm/ 14.5 x 11 x 13.5 in
Weight	65 lb/29.5 kg



- Bottles are constructed of high quality borosilicate glass
- High temperature caps have a rugged seal for leakproof performance

Ordering Information

Cat#	Description
B3003	Large hybridization bottle, 300 x 35mm
B3003-PC	Large hybridization bottle, 300 x 35mm, plastic coated
B3003-DC	Large hybridization bottle, 300 x 35mm, caps on both ends
B2503	Medium hybridization bottle, 250 x 35mm
B1503	Small hybridization bottle, 150 x 35mm
B1503-PC	Small hybridization bottle, 150 x 35mm, plastic coated
B2753	Small hybridization bottle, two 75mm chambers
B0753	Extra small hybridization bottle, 75 x 35mm
B1500-CAP	Replacement cap with seal, fits all 35mm bottles
B1500-SEAL	Replacement seal, fits all 35mm bottle caps, pk/10
B1124	Bottle rack for six 35mm bottles
H9088	Large hybridization mesh, 23 x 23cm, pk/5 sheets
H9089	Small hybridization mesh, 10 x 15cm, pk/5 sheets
H9090	Roll of hybridization mesh, 101 x 457cm

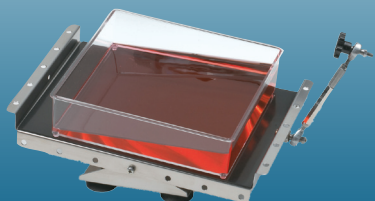


B1124

- Ovens accept a rocking platform when the rotisserie is removed
- Various shaker platforms are available for the ProBlot 12S



H1200-250A



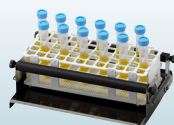
H1200-RA

Ordering Information

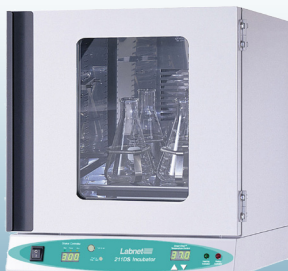
Cat#	Description
H1200-RA	Rocking platform with attachment hardware
H1264-VA	Rotisserie for 64 x 1.5mL or 32 x 15mL, vertical
H1264-HA	Rotisserie for 64 x 1.5mL or 32 x 15mL, horizontal

Accessories for ProBlot 12S only

H1200-250A	Flask platform with 6 x 250mL flask clamps
H1200-18	Universal platform for flask clamps (max 2 x 1L, 5 x 500mL, 12 x 125mL, 5 x 50mL)



S2031-13 with K566



I5231

Specifications

Temp Range	Ambient +5° to 80°C
Temp Uniformity	±0.25°C
Temp Accuracy	±0.1°C
Shaker speed	20 - 300 rpm
Timer	0-99 min or continuous
Shaker orbit	19 mm
Exterior dims	42.5 x 55 x 58 cm/ 16.75 x 21.75 x 23 in
Chamber dims	34.3 x 37.5 x 38.1 cm/ 13.5 x 14.25 x 15 in
Chamber volume	1.7 cu ft/49 liters
Weight	83 lb/37.7 kg



- Integrated digital orbital shaker
- Exclusive SmartCheck temperature control system
- Broad temperature ranges to meet a wide variety of applications
- Stacking design saves space

Ordering Information

Cat#	Description
I5211-DS	211DS Shaking Incubator, 120V
I5211-SA	Stacking adapter, required when stacking incubators
I5230	Flask clamp platform, pre drilled (see clamps below)
I5231	Flat platform with non-slip rubber mat (30 x 30cm)
I5231-D	Double flat platform with non-slip rubber mat
S2031-13	Universal spring loaded clamp platform for flasks, bottles, etc.
S2040-85	Flask clamp, 125mL (max 16)
S2040-99	Flask clamp, 250mL (max 9)
S2040-09	Flask clamp, 500mL (max 5)
S2040-01	Flask clamp, 1000mL (max 4)

*To order 230V units add -230V to the end of the catalog number. 230V unit includes -EU and -UK cords
**Other size flask clamps are available. Call for details.

- Exclusive SmartCheck temperature control system
- Broad temperature range to meet a wide variety of applications
- Gasketed door with large, integral viewing area

Ordering Information

Cat#	Description
I-5311-DS*	311DS Shaking Incubator, 120V
I5322	Additional shelf
I5331	Flat platform with non-slip rubber mat (39 x 33 cm)
I5330	Shaking platform pre-drilled for flask clamps (flask clamps sold separately, see 211DS)
I5330-2000	Platform with 4 x 2L flask clamps
I5330-1000	Platform with 6 x 1L flask clamps
I5330-500	Platform with 8 x 500mL flask clamps
I5330-250	Platform with 12 x 250mL flask clamps
I5330-125	Platform with 20 x 125mL flask clamps
I5330-50	Platform with 30 x 50mL flask clamps



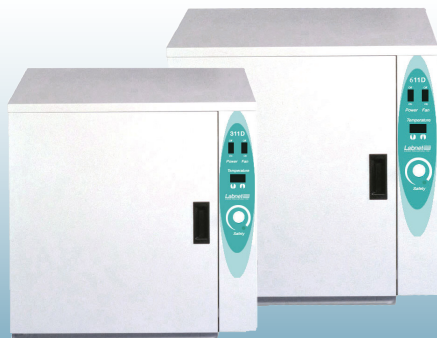
Specifications

Temp Range	Ambient +5° to 80°C
Temp Uniformity	±0.25°C
Temp Accuracy	±0.1°C
Shaker speed	20 - 300 rpm
Timer	0-99 min or continuous
Shaker orbit	19 mm
Exterior dims	57.4 x 54.4 x 63.5 cm/ 22.6 x 21.4 x 25 in
Chamber dims	44.2 x 39.6 x 40.6 cm/ 17.4 x 15.6 x 16 in
Chamber volume	2.5 cu ft/71 liters
Weight	140 lb/63.6 kg



*To order 230V units add -230V to the end of the catalog number. 230V units include -EU and -UK cords.
**Rack holders to fit onto universal platform are available. Call for details.

- Gravity or mechanical convection settings
- Solid outer door with inner viewing door and interior light
- Internal outlet for powering small equipment
- Precise SmartCheck digital microprocessor temperature control



Ordering Information

Cat#	Description
I-5311-D*	311D Digital Incubator, 120V
I-5319	Additional shelf for 311D
I-5611-D*	611D Digital Incubator, 120V
I-5619	Additional shelf for 611D

* Item not available in other voltages

Specifications

	311D	611D
Temp range	Ambient +5 to 95°C	Ambient +5 to 95°C
Temp uniformity	±0.2°C @ 37°C	±0.2°C @ 37°C
Exterior dims	68.6 x 51 x 73.7 cm/ 27 x 20 x 29 in	78.5 x 66 x 86.4 cm/ 31 x 26 x 34 in
Chamber dims	43.2 x 35.6 x 51 cm/ 17 x 14 x 20 in	53.3 x 51 x 63.5 cm/ 21 x 20 x 25 in
Chamber volume	2.75 cu ft/77.9 liters	6.0 cu ft/169.9 liters
Weight	140 lb/63.6 kg	185 lb/84 kg



222DS Benchtop Shaking Incubator



Specifications

Temp Range	Ambient +5°C - 70°C
Temp Accuracy	±0.5°C
Temp Uniformity	±0.5°C
Shaker Speed	20 - 300 rpm
Shaker Motion/Orbit	Circular, 19mm
Timer	1 min - 99 hrs or continuous
Dimensions	37 x 53 x 40 cm/ 14.6 x 20.9 x 15.7 in
Height with lid open	55 cm/21.7 in
Platform dims	30 x 30 cm/11.8 x 11.8 in
Weight	43 lb/19.5 kg



- Exceptional versatility
- SmartCheck Software
- Compact design allows unit to open under shelves
- Flexibility of control from keypad or software

Ordering Information

Cat#	Description
I-5222-DS*	222DS Benchtop Shaking Incubator, 120V
I-5230-DS	Universal Platform, 30 x 30 cm
I-5220	Petri dish shelf
I-5240	Sticky Mat, 15 x 15 x 3 cm
I-5250	Microtiter hotel for 3 x microplates stacked horizontally
I-5260	Combi tube holder, 6 x 15/50mL tubes
I-2041-1000	Plastic flask clamp, 1000mL (max 4)
I-2041-500	Plastic flask clamp, 500mL (max 5)
I-2041-250	Plastic flask clamp, 250mL (max 9)
I-2041-125	Plastic flask clamp, 125mL (max 16)

* To order 230V units add -230V to the end of the catalog number. 230V units include -EU and -UK cords.



- Small foot print
- 8 interchangeable blocks to accommodate all of your tube sizes
- Rapid cooling and heating
- Fine-tune speed control from 300-1500rpm

Specifications

Temp Setting Range	0 - 105°C
Temp Control Range	RT -14°C - 100°C
Timer	1 min - 99 hr 59 min
Mixing Speed	300 - 1500 rpm
Mixing Amplitude	3 mm
Temp Control Accuracy	<±0.5°C
Display Accuracy	<±0.5°C
Temp Uniformity	<±0.5°C
Heating Time	6.5°C/min
Cooling Time	1.5°C/min



Ordering Information

Cat#	Description
I-4001-HCS	AccuTherm Microtube shaking incubator, 120V
I-4002-HCS	AccuTherm Microtube shaking incubator, 230V
I-4000-A	Block A, 40 x 1.5mL
I-4000-B	Block B, 54 x 0.5mL
I-4000-C	Block C, 96 x 0.2mL
I-4000-D	Block D, 24 x 15mL
I-4000-E	Block E, Water bath (ID: 115 x 73 x 38mm)
I-4000-G	Block G, 26 x 0.5mL and 24 x 1.5mL
I-4000-H	Block H, 40 x 0.2mL
I-4000-J	Block J, 96 well ELISA plate

- Shake and incubate samples simultaneously
- Supplied with interchangeable platforms for microtubes or microplates
- Broad temperature and speed range
- Intelligent control with digital LED display
- Shaking feature can be turned off, allowing the unit to be used as a static incubator



Ordering Information

Cat#	Description
S2056A*	Vortemp 56 Shaking incubator for microtubes and microplates, 120V
S2056-R	Additional platform/workstation for microtubes
S2056-Q	Additional platform/workstation for microplates
C1205	Individual adapters for 0.5/0.6mL tubes, pk/6
C1206	Individual adapters for 0.4mL tubes, pk/6
C1222	Individual adapters form 0.2mL tubes, pk/6

*To order 230V units add -230V to the end of the catalog number. 230V units include EU and UK cords.

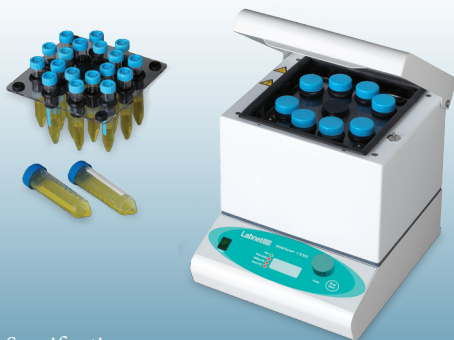
Specifications

Temp Range	Ambient +5° to 99°C
Temp Accuracy	±0.5°C
Speed range	200-1400* rpm
Motion/orbit	Circular/3mm
Timer	1 - 99 min or continuous
Capacity	56 x 1.5/2.0mL tubes, 4 std or 2 deepwell microplates
Dimensions	23 x 31 x 23 cm/ 9.1 x 12.2 x 9.1 in
Weight	24.2 lb/11 kg

*Max speed for the 230V unit is 1,200 rpm



- Shake and incubate samples simultaneously
- Supplied with interchangeable platforms for 15 and 50mL tubes
- Broad temperature and speed range
- Intelligent control with digital LED display



Ordering Information

Cat#	Description
S2050A*	Vortemp 1550 Shaking incubator for 15 and 50mL tubes, 120V
C1205	Individual adapters for 0.5/0.6mL tubes, pk/6
C1206	Individual adapters for 0.4mL tubes, pk/6
C1222	Individual adapters form 0.2mL tubes, pk/6

*To order 230V units add -230V to the end of the catalog number. 230V units include EU and UK cords.

Specifications

Temp Range	Ambient +5° to 99°C
Temp Accuracy	±0.5°C
Speed range	200 - 900 rpm
Motion/orbit	Circular/3mm
Timer	1 - 99 min or continuous
Capacity	18 x 15mL tubes or 8 x 50mL tubes
Dimensions	26 x 31 x 31cm/ 10.2 x 12.2 x 12.2 in
Weight	26.6 lb/12 kg



Mini Incubator



I5110-MLR



- Ideal for small laboratories and classrooms
- Broad temperature range
- Rear cord port allows for use of small mixers inside
- Includes one shelf, which can be placed at two points within the corrosion resistant chamber

Specifications

Temp Range	Ambient +5° to 60°C
Capacity	9.2 liters/0.375 cu ft
Controls	Analog
Exterior dims	28.5 x 28 x 33.5 cm/ 11.2 x 11 x 13.2 in
Interior dims	12 x 20 x 20 cm/ 9 x 7.9 x 7.9 in
Weight	18.4 lb/8.3 kg

Ordering Information

Cat#	Description
I5110A	Mini Incubator , 120V
I5110-MLR*	Mini Incubator with Mini LabRoller and rotiseries for 1.5, 15 and 50mL tubes
I5110-SHELF	Additional shelf, 22 x 18 cm
W0020-110C	Non-toxic safety thermometer for -20° to 110°C, with 1 resolution, 305mm long, 76mm immersion

*To order 230V units add -230V to the end of the catalog number, Specify cord type by adding -EU or -UK



AccuRack

- Accurate temperature control to 100°C
- Precision LCD digital display
- 12 x 1.5mL tube capacity
- Compact and convenient
- *AccuRack* transfer rack included

Ordering Information

Cat#	Description
D0100*	AccuBlock Mini Digital Dry Bath , 12 x 1.5mL tubes, 120V

*To order 230V units add -230V to the end of the catalog number. 230V units include EU and UK cords

Specifications

Temp Range	Ambient +5° to 100°C
Temp Increments	0.1°C
Temp Uniformity	≤0.2°C
Temp Accuracy	≤0.2°C
Timer	0-19 hr 59 min or continuous
Block	Anodized Aluminum
Block capacity	12 x 1.5mL tubes
Dimensions	14 x 12 x 6 cm/ 5.5 x 4.8 x 2.4 in
Weight	3 lb/1.3 kg



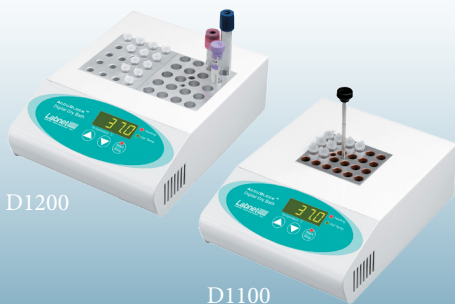
- Precise microprocessor control
- Broad temperature range to 150°C
- Large digital display
- Easy user calibration
- Single and Dual block models
- Block chamber also accepts sand, water, armor and glass beads.

Ordering Information

Cat#	Description
D1100*	AccuBlock Digital Dry Bath , single block capacity, 120V
D1200*	AccuBlock Digital Dry Bath , double block capacity, 120V

See Page 7 for available block formations

*To order 230V units add -230V to the end of the catalog number. 230V units include EU and UK cords.



D1200

D1100

Specifications

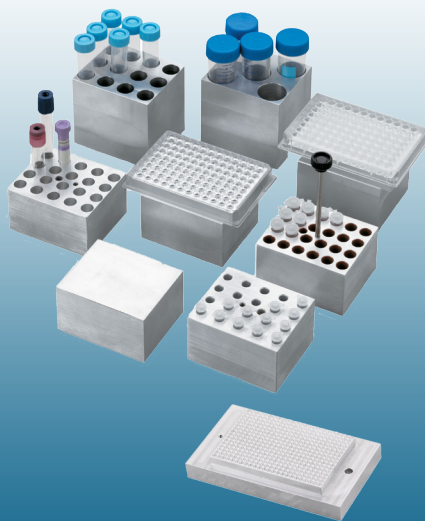
Temp Range	Ambient +5° to 150°C
Temp Increments	0.1°C
Temp Resolution	0.1°C
Temp Uniformity	±0.2°C
Temp Accuracy	±0.3°C
Temp Control	Microprocessor
Block chamber	Stainless steel
Dimensions	20 x 26.5 x 8.3 cm/ 7.9 x 10.4 x 3.3 in
Weight	4.8 lb/2.2 kg



- Corrosion resistant, anodized, high grade, non-porous aluminum
- Blocks for tubes from 0.2mL to 50mL, plates and slides
- Precision machined for a close fit and efficient heat transfer

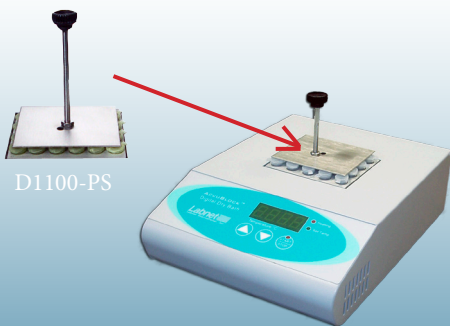
Ordering Information

Cat#	Description
D1101	Solid block for machining (no holes)
D1102	48 x 0.2mL PCR tubes or 6 x 0.2mL strips
D1102A	24 x 2.0mL tubes
D1105	24 x 0.5mL tubes
D1105A	24 x 1.5mL tubes
D1106	35 x 6 mm tubes
D1110	20 x 10 mm tubes
D1112	20 x 12 mm tubes
D1113	20 x 13 mm tubes
D1115-TALL	12 x 15mL centrifuge tubes
D1116	12 x 15 or 16mm tubes



Dry Bath Accessories cont.

- Thermometer well is available in all blocks except those used with plates and slides
- Will fit into any dry bath with an opening of 3.05 x 3.60 in. D1196-PCR requires a depth of 2.125 in or less.



D1100-PS



D1105A-RACK

Ordering Information

Cat#	Description
D1117	12 x 17 mm tubes
D1120	6 x 20 mm tubes
D1125	6 x 25 mm tubes
D1150-TALL	5 x 50mL centrifuge tubes
D1196-PCR	96 well PCR plate (single block only)
D1296	96 well microtiter plater or 4 slides (dual block)
D1296-PCR	96 well PCR plate (dual block)
D1100-PS	PopStopper for microtube blocks D1102, D1102A, D1105, D1105A
D12384	384 well PCR plate (dual block)
D1105A-RACK	AccuRack accessory for 20 x 1.5mL tubes, compatible with D1105A, pk/3



- Precise temperature and stirring controls
- Digital display and safety indicators
- Optional external temperature controller
- Fully ceramic top surface

Specifications

Temp Range	5° - 550°C
Temp Accuracy	± 2.0°C
Top Plate Material	Ceramic
Top Plate Size	12.7 x 17.8 cm/5 x 7 in
Dimensions	19.7 x 28 x 10.8 cm/ 7.8 x 11 x 4.3 in
Weight	6 lb/2.7 kg



Ordering Information

Cat#	Description
D0400*	AccuPlate Hotplate , 5" x 7" ceramic top, 120V
D0461	Kit includes D0462, D0466 and Stir Bar retriever
D0462	External Temperature Probe
D0463	PTFE coated magnetic stir bar (1 x 2.5 cm)
D0464	Boss Head clamp - for holding D0465 at a 90° angle from D0466
D0465	Temperature probe (D0462) holding rod
D0466	Vertical support rod, two 22.8 cm rods which can be connected

*To order 230V units add -230V to the end of the catalog number. 230V units include EU and UK cords.

- Powerful magnets prevent decoupling during stirring
- Durable aluminum housing
- Bright, easy-to-read LED
- Channel directs spills away from electronics for safety

Ordering Information

Cat#	Description
D0410*	AccuPlate Stirrer , 5" x 7" ceramic top, 120V
D0461	Kit includes D0462, D0466 and Stir Bar retriever
D0463	PTFE coated magnetic stir bar (1 x 2.5 cm)

*To order 230V units add -230V to the end of the catalog number. 230V units include EU and UK cords.



Specifications

Speed Range	60 - 1150 rpm
Speed Accuracy	± 5%
Top Plate Material	Ceramic
Top Plate Size	12.7 x 17.8 cm/5 x 7 in
Dimensions	19.7 x 28 x 10.8 cm/ 7.8 x 11 x 4.3 in
Weight	7 lb/3.2 kg



- Hot top indicator
- Easy to use control knobs
- Chemical-resistant Pyroceram® ceramic top
- Thermal fuse prevents over-heating

Ordering Information

Cat#	Description
D0420*	AccuPlate Hotplate Stirrer , 5" x 7" ceramic top, 120V
D0461	Kit includes D0462, D0466 and Stir Bar retriever
D0462	External Temperature Probe
D0463	PTFE coated magnetic stir bar (1 x 2.5 cm)
D0464	Boss Head clamp - for holding D0465 at a 90° angle from D0466
D0465	Temperature probe (D0462) holding rod
D0466	Vertical support rod, two 22.8 cm rods which can be connected

*To order 230V units add -230V to the end of the catalog number. 230V units include EU and UK cords.



Specifications

Temp Range	5° - 550°C
Temp Accuracy	± 2.0°C
Speed Range	60 - 1150 rpm
Speed Accuracy	± 5%
Top Plate Material	Ceramic
Top Plate Size	12.7 x 17.8 cm/5 x 7 in
Dimensions	19.7 x 28 x 10.8 cm/ 7.8 x 11 x 4.3 in
Weight	7 lb/3.2 kg



- Ideal for small laboratories and classrooms
- Broad temperature range
- Stainless steel cover included with thermometer opening
- 6 liter capacity can accommodate test tube racks or up to three 250 flasks

Ordering Information

Cat#	Description
W1106A*	Mini Water Bath with stainless steel gable cover and thermometer clip, 120V
W0020-110C	Non-toxic safety thermometer for -20°C to 110°C, with 1 resolution, 305mm long, 76mm immersion

*To order 230V units add -230V to the end of the catalog number. 230V units include EU and UK cords.

Specifications

Temp Range	Ambient +5° to 100°C
Capacity	6 liters
Controls	Analog
Heater	550W
Exterior dims	36 x 28 x 32 cm/ 14 x 11 x 13 in
Interior dims	32 x 17 x 17.5 cm/ 12.6 x 6.7 x 6.9 in
Weight	17 lb/7.7 kg

Labnet

Labnet International, Inc.

31 Mayfield Avenue · Edison, NJ · USA

Phone toll free: 888-LABNET1 Fax: 732-417-1750

International: +1-732-417-0700

labnet info@corning.com · www.labnetinternational.com

FOLLOW US & LIKE US! 

