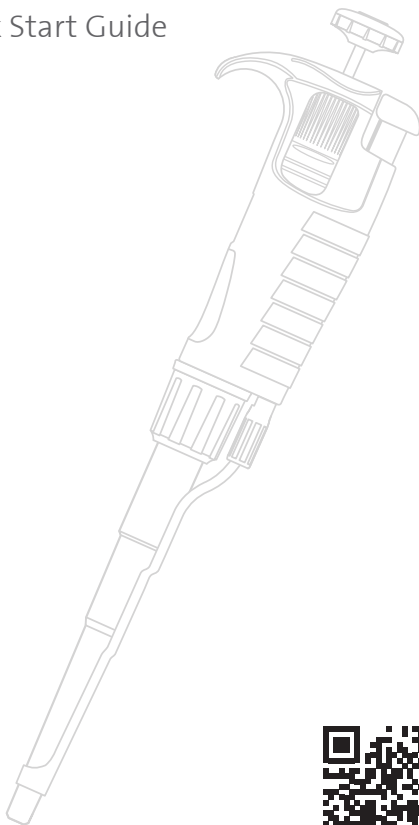




Labnet™ BioPette™ Plus Single- and Multi-channel Pipettors

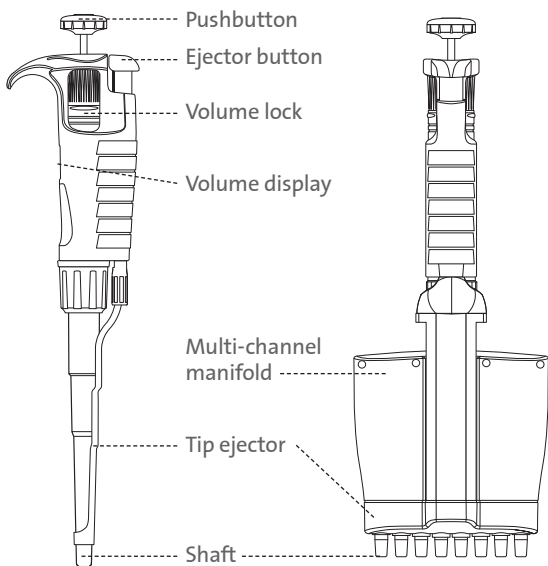
Quick Start Guide



This quick guide is intended to provide a brief overview of the main features and operation. For detailed information see the Instruction Manual (CLSLN-AN-1015DOC) at www.labnetlink.com.

Getting Started

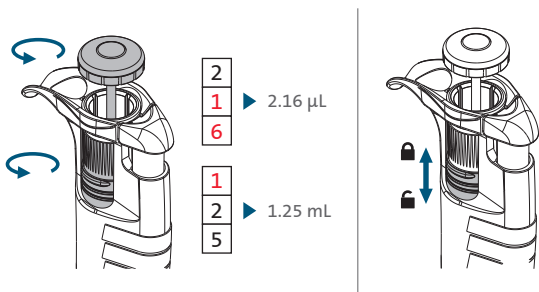
Labnet™ BioPette™ Plus Pipettors are volumetric instruments designed to measure and transfer liquids precisely and safely with the use of disposable pipette tips.



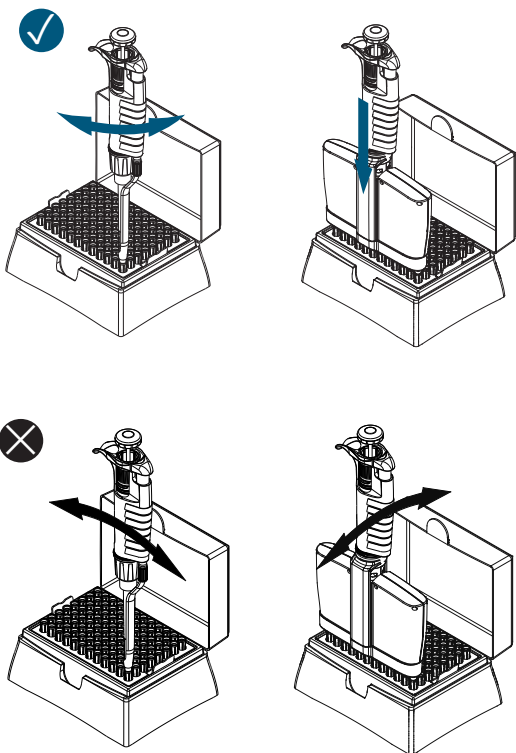
The pipettors operate on the air-cushion principle (i.e., the aspirated liquid does not come in contact with the shaft or plunger of the pipettor).

They can accommodate volumes from 0.1 μL to 10,000 μL depending on the model. They are available in single-, 8- and 12-channel variable volume.

Set and Lock the Volume

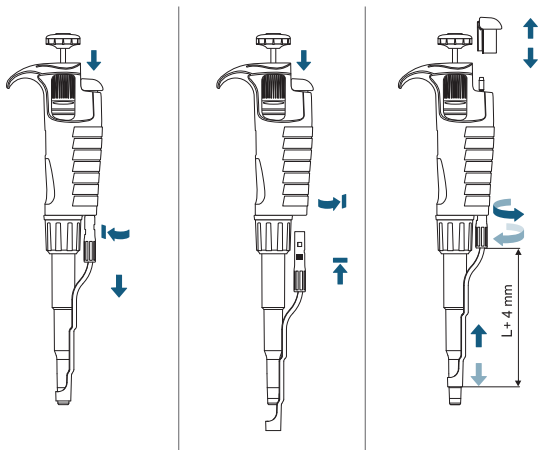


Insert the Tip

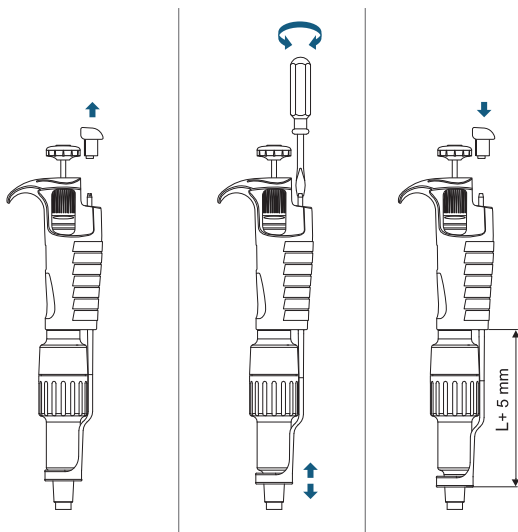


Ejector Adjustment

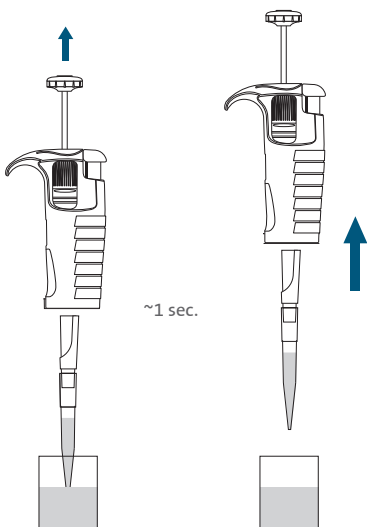
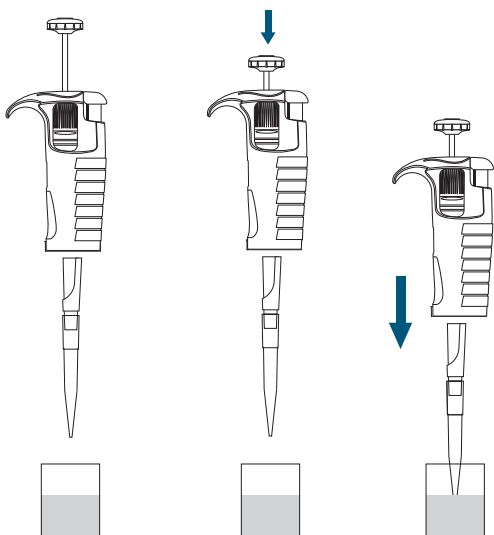
2-1,000 μL pipettors



5,000 and 10,000 μL pipettors

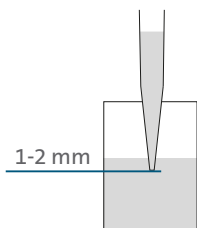


Aspirate the Liquid

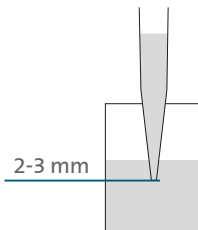


Recommended Depth

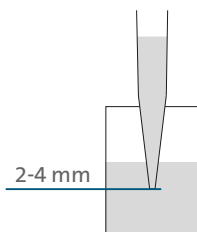
0.1-1 μL



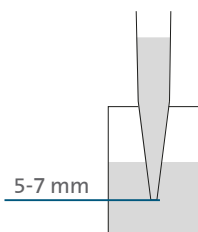
1-100 μL



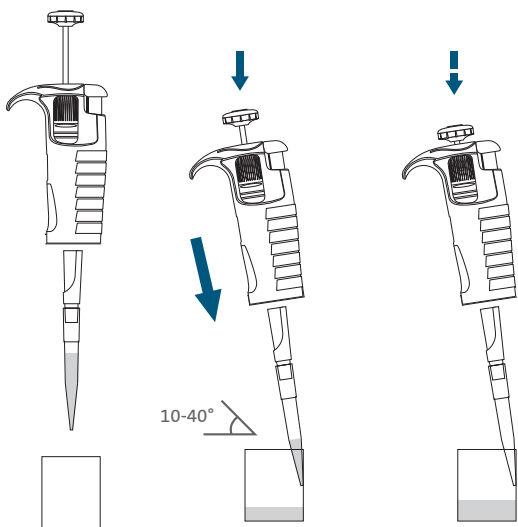
101-1,000 μL



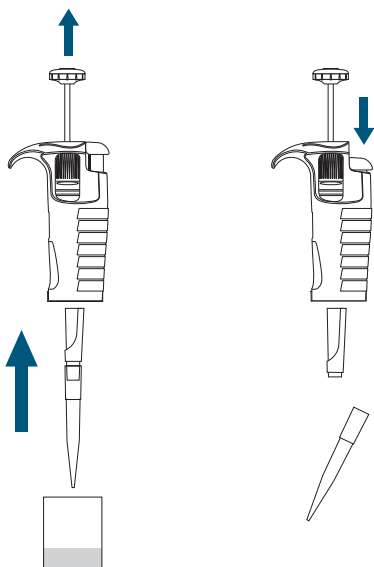
>1,000 μL



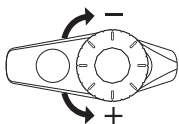
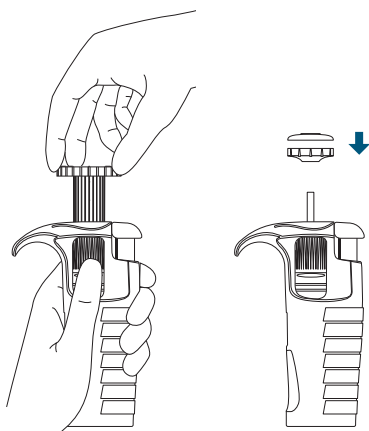
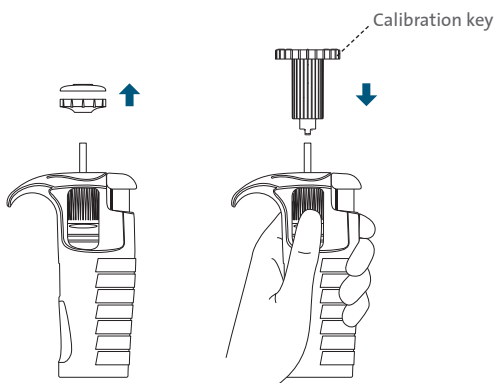
Dispense the Liquid



Eject the Tip



Calibration



NOTE: Before calibration, always remember to lock the volume using the lock function.

Safety Recommendations

- The pipettor is designed for the transfer of liquids only using the tip. Do not aspirate liquids without the tip attached. The aspirated liquid should not enter the pipettor, as it may cause damage.
- Single-use tips reduce the risk of contamination of samples.
- Keep the pipettor clean, avoiding the use of abrasive or corrosive cleaning agents (e.g., acetone).
- Keep the pipettor upright when there is liquid in the tip.
- Only using the pipettor in accordance with the manufacturer's instructions ensures the correct pipettor parameters are maintained.
- After replacing the plunger or the shaft, the pipettor should be calibrated.
- In the case of incorrect operation, the device should be cleaned in accordance with the Instruction Manual (CLSLN-AN-1015DOC) or transferred to a service point.
- Ambient operating temperature is +5°C to 45°C.
- Ambient storage conditions (in the original packaging during transport and short storage) is -25°C to 55°C.



- Follow general work safety regulations regarding hazards related to work in the laboratory.
- Take special care when pipetting aggressive substances.
- Use appropriate protective attire (e.g. clothing, goggles and gloves).
- Avoid pointing the pipettor at yourself or others during use.
- Only use parts and accessories recommended by the manufacturer.

Cleaning

- External parts may be cleaned with a swab moistened with isopropyl alcohol.
- Pipettors can be autoclaved at 121°C for 20 minutes. Prior to autoclaving, untighten the pipettor shaft, remove the filter from 5 and 10 mL pipettor shafts.
- The outer body of the pipettor is UV-resistant. The recommended distance from the radiation source to exposed element should not be less than 50 cm.
- Prolonged and very intense UV exposure can cause de-coloration of pipettor parts but does not affect its performance.

Limited Warranty

Labnet™ BioPette™ Plus Single- and Multi-channel Pipettors are covered by a three (3) year limited warranty. For more information on the warranty limitations refer to the full version of the Instruction Manual (CLSLN-AN-1015DOC) available at www.labnetlink.com.

To request certificates, please contact us at www.labnetlink.com.

Warranty/Disclaimer: Unless otherwise specified, all products are for research use or general laboratory use only.* Not intended for use in diagnostic or therapeutic procedures. Not for use in humans. These products are not intended to mitigate the presence of microorganisms on surfaces or in the environment, where such organisms can be deleterious to humans or the environment. Corning Life Sciences makes no claims regarding the performance of these products for clinical or diagnostic applications. *For a listing of US medical devices, regulatory classifications or specific information on claims, visit www.corning.com/resources.

CORNING

Corning Incorporated

Life Sciences

www.corning.com/lifesciences

NORTH AMERICA

t 800.492.1110

t 978.442.2200

ASIA/PACIFIC

Australia/New Zealand

t 61 427286832

Chinese Mainland

t 86 21 3338 4338

India

t 91 124 4604000

Japan

t 81 3-3586 1996

Korea

t 82 2-796-9500

Singapore

t 65 6572-9740

Taiwan

t 886 2-2716-0338

EUROPE

CSEurope@corning.com

France

t 0800 916 882

Germany

t 0800 101 1153

The Netherlands

t 20 655 79 28

United Kingdom

t 0800 376 8660

All Other European Countries

t +31 (0) 206 59 60 51

LATIN AMERICA

grupoLA@corning.com

Brasil

t 55 (11) 3089-7400

Mexico

t (52-81) 8158-8400

Labnet 

www.labnetlink.com

Made in Poland

The information contained within is accurate as of the date of publication and subject to change without notice. For a listing of trademarks, visit www.corning.com/trademarks. All other trademarks are the property of their respective owners.

© 2025 Corning Incorporated. All rights reserved.
11/25 CLSLN-AN-1049DOC REV1