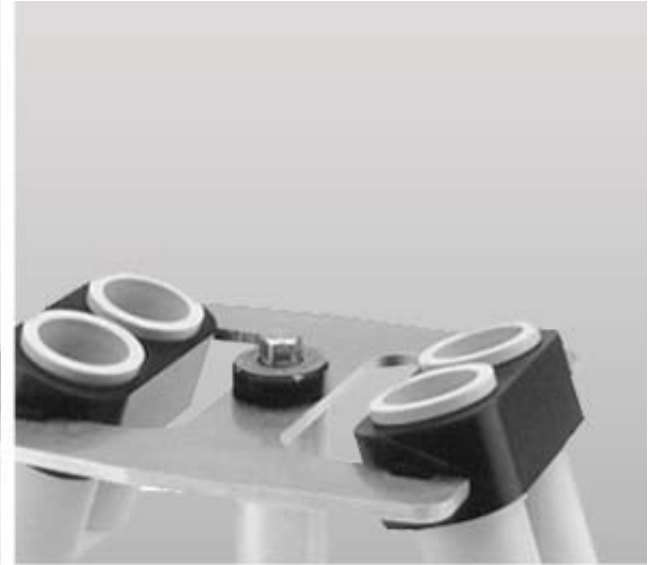
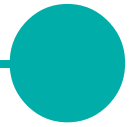


HERMLE

Labnet



Universal
Laboratory Centrifuge
Z 300

Compact Versatility

The Z300 ambient centrifuge is well suited for all standard blood collection, conical and microcentrifuge tubes as well as standard and deep well microplates. High speed and g-force make the Z 300 ideal for applications ranging from clinical to cell culture and molecular biology.

Powerful, brushless motors quickly accelerate rotors to the preset speed. Braking is dynamically controlled to bring the rotors to a soft stop without disrupting fragile samples. Operation of the centrifuge may be timed, continuous or momentary.

Microprocessor based control panels allow quick and easy programming. Operating parameters are set with convenient turn knobs while the values (run time, rpm, g-force and temperature) are shown on large digital display.

The rotor recognition system in the Z 300 provides safety and convenience when different rotors are used. Each rotor is recognized at the beginning of a run and automatically limited to its rated maximum speed. In addition, by recognizing the rotor, the microprocessor can accurately calculate and display g-force during a run.

Ambient air circulates throughout the chamber of the Z 300 preventing significant rises in sample temperature.

Z 300 Advantages

- More than 13 rotor options
- Accommodates tubes from 0.2 ml to 100 ml
- Quiet, maintenance-free induction drive
- Automatic rotor recognition system
- Imbalance sensor with safety shut down
- Compact, space saving design
- Microprocessor control with digital display
- Corrosion resistant, stainless steel rotor chamber
- Automatic g-force calculation and display

Specifications:

Max. volume:	400 ml (4 x 100 ml)
Max. speed/rcf:	13,500rpm
Min. speed/rcf:	17,310 x g
Timer:	1 to 60 minutes or continuous
Brake:	Dynamically controlled
Dimensions	14 x 18 x 13 in./35.5 x 47.5 x 33 cm
Weight	88 lb/40 kg

Ordering Information:

C0300	Z 300 Universal Centrifuge, 120V
C0300-230V	Z 300 Universal Centrifuge, 230V

Accessories

Swing-out rotors

4 x 100 ml
w/buckets



Order number	C0323-72
Max. speed in rpm	4000rpm
Max. radius	14 cm
Max. RCF (g-value)	2504 x g

4 x 100 ml
economical



Order number	C0300-12
Max. speed in rpm	4500rpm
Max. radius	14.8 cm
Max. RCF (g-value)	3350 x g

Inserts (four required)

1 x 100/80ml pk of 2	C0320-720
1 x 50 ml conical pk of 2	C0320-728
2 x 15 ml conical pk of 2	C0320-726
4 x 10 ml pk of 2	C0320-724
4 x 5/7 mlpk of 2	C0320-725
5 x 1.5ml pk of 2	C0320-721

Carriers (four required)

1 x 100/ml pk of 2	C0300-120
1 x 50 ml conical pk of 2	C0300-122
2 x 15 ml conical pk of 2	C0300-123
7 x 10 ml pk of 2	C0300-124
7 x 5/7 mlpk of 2	C0300-126

4 x 50 ml



Order number	C-0300-50
Max. speed	4000rpm/2540 x g

8 x 15 ml



Order number	C-0300-15
Max. speed	5000rpm/4164 x g

2 x 3 microplates



Order number	C0300-16
Max. speed	3500rpm/1500 x g

Angle rotors

6 x 50 ml



Order number	C0300-97
Max. speed	6000rpm/4306 x g
Adapters:	C0232-8B -15ml,pk/6 C0232-9B -7ml,pk/6

12 x 15 ml



Order number	C0300-96
Max. speed	6000rpm/3863 x g
Adapters:	C0200-17A -5/7ml,pk/6

24 x 1.5/2.0 ml
(H-Hermetically sealed)



Order number	C0252-87/H
Max. speed	13500rpm/17310 xg

24 x 1.5/2.0 ml
24 x 0.5ml



Order number	C0252-55
Max. speed	13500rpm/17110 xg

44 x 1.5/2.0 ml



Order number	C02582-9
Max. speed	13500rpm/17110 xg

Adapters	C1205 - 0.5/0.6ml,pk/6 C1206 - 0.4/0.25ml,pk/6 C1222 - 0.2ml,pk/6
-----------------	--